

Prevention



REC

ISO 6400
F 5.6

d®

00: 00

00:00:12:00

Prevention: thermal cameras



Helmet-based



**For entrances,
stand-alone**



**For entrances
- with access control**



**Integrated with
CCTV setup**

- Traffic count.
- High body temperature alarms.
- Mask / no-Mask detection.
- Facial recognition.

- Measurement accuracy:
+/- 0.1 degree C.
- Operating temperature:
+5.0°C ~ 50.0°C.

Prevention: Potential-at-risk tracing



Trace and record the movement of employees and visitors within buildings.



Tag verified infected cases at any point in time.



Replay the visitor flow and simulate the likely spread of the virus by tracing back contact based on proximity and time.

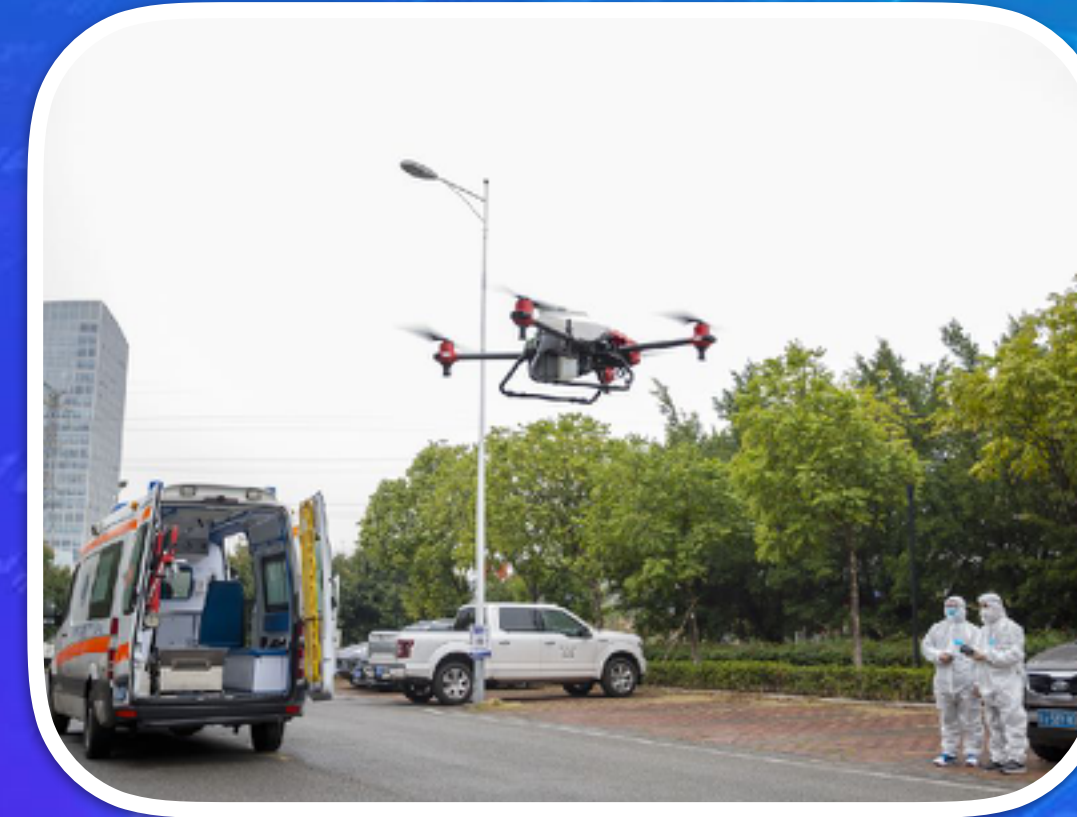


Receive weekly compliance reports.

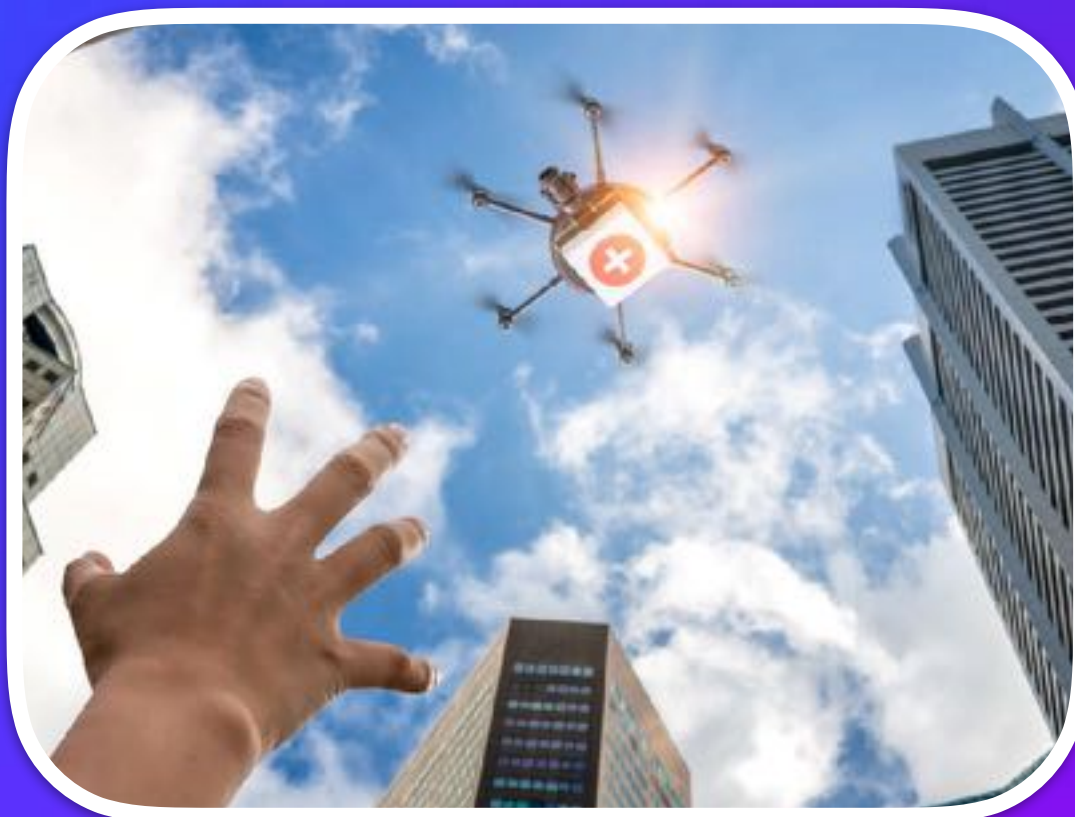
Prevention: drones



Scan & broadcast.



Disinfecting
common areas.



Emergency delivery.



Lockdown surveillance.

